



5 Copper Close, 43 London Road

Guide Price £525,000

DOMINIC MURPHY POWERED BY **exp** TM UK

@ dominic.murphy@exp.uk.com

🌐 dominicmurphy.exp.uk.com

☎ 01304 746 016

5 Copper Close, 43 London Road

Introducing an exclusive opportunity to own a brand new four bedroom detached home which is one of just a matching pair, masterfully built on a former police station site in the heart of Deal. These stunning residences blend contemporary, high-specification finishes, crafted by reputable local builders renowned for their exceptional quality.

Each home boasts an elegant design offering all the modern comforts expected of luxury living. From state of the art kitchens fitted with premium quartz work tops and appliances to spacious, light-filled living areas and stylish bathrooms, these homes are designed for a lifestyle of sophistication and ease. With meticulous attention to detail, these properties offer the latest in energy-efficient insulation, air sourced heating with underfloor heating, and high-quality materials throughout.

Internally In brief comprising: Entrance Hall, cloakroom WC, generous size front lounge with French doors into the stylish open planned kitchen/dining room enjoying bi-fold doors opening wide to the large garden. Off the kitchen is a utility room. Upstairs there are four bedrooms with en-suite to the master plus the family bathrom suite.

Also comes with private parking spaces for upto 2 vehicles, generous size private gardens and a 10 year warranty.

Located in Deal, a picturesque seaside town with rich history, these homes are just moments away from the vibrant high street, the beach, and excellent local amenities, including independent boutiques, cafes, and renowned restaurants.

Whether you're looking for a stylish permanent residence or a chic coastal retreat, these homes offer modern luxury, with the peace of mind of being constructed by expert local craftsmen.



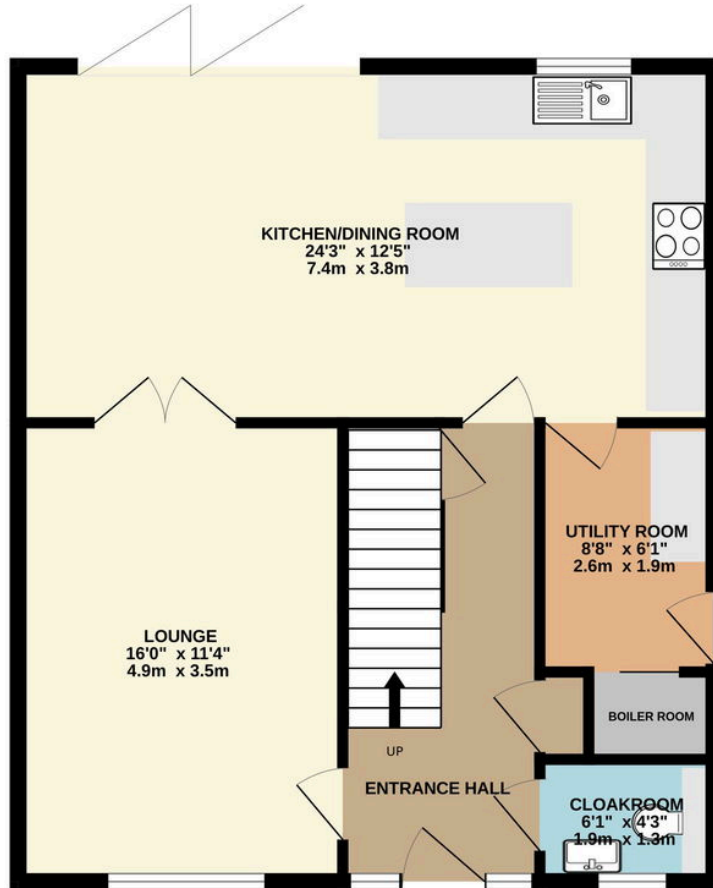




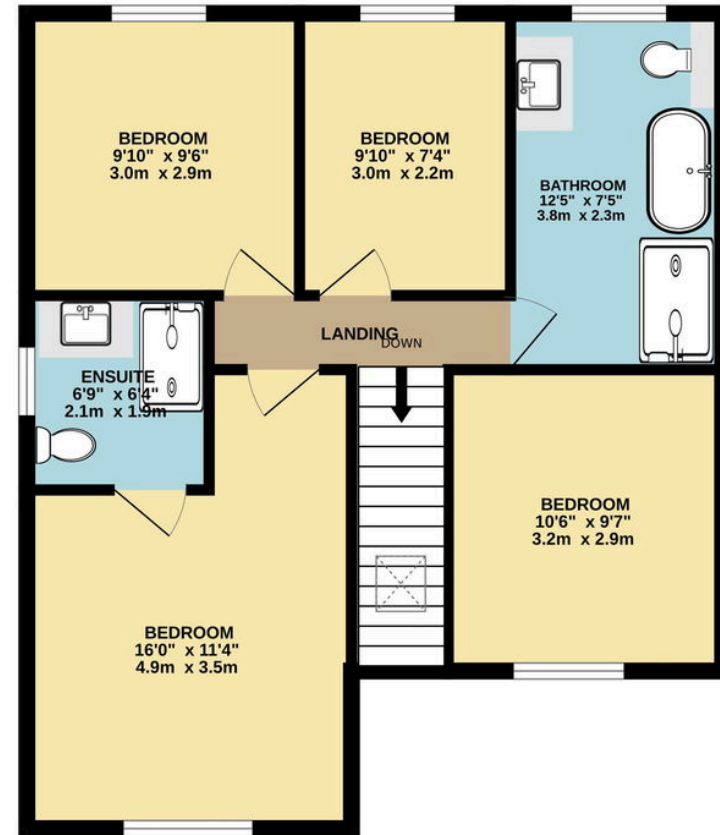




GROUND FLOOR
690 sq.ft. (64.1 sq.m.) approx.



1ST FLOOR
619 sq.ft. (57.5 sq.m.) approx.



TOTAL FLOOR AREA : 1309 sq.ft. (121.6 sq.m.) approx.

Whilst every attempt has been made to ensure the accuracy of the floorplan contained here, measurements of doors, windows, rooms and any other items are approximate and no responsibility is taken for any error, omission or mis-statement. This plan is for illustrative purposes only and should be used as such by any prospective purchaser. The services, systems and appliances shown have not been tested and no guarantee as to their operability or efficiency can be given.
Made with Metropix ©2024

eXp World UK Ltd is a registered company at Level 37, 25 Canada Square, London, E14 5LQ.

Registered company number is 12016573. VAT Registration Number is 327 4120 29