



2 Copper Close, 43 London Road

£400,000

DOMINIC MURPHY POWERED BY exp TM UK

@ dominic.murphy@exp.uk.com

dominicmurphy.exp.uk.com

01304 746 016

2 Copper Close, 43 London Road

Introducing an exclusive opportunity to own one of three unique homes, masterfully converted from a historic former police station in the heart of Deal, Kent. These stunning residences blend contemporary, high-specification finishes, crafted by reputable local builders renowned for their exceptional quality.

Each home boasts a contemporary design offering all the modern comforts expected of luxury living. From state of the art kitchens fitted with premium quartz work tops and appliances to spacious, living areas and stylish bathrooms, these homes are designed for a lifestyle of sophistication and ease. With meticulous attention to detail and high-quality materials throughout.

Internally In brief comprising: Entrance Hall, stylish kitchen/dining room and utility room, cloakroom WC, generous size front lounge with bi-fold doors. Upstairs there are three bedrooms, with en-suite to the master, plus the family bathrom.

Also comes with private gardens and a staircase down to a handy cellar/store area, parking spaces as well as a 10 year warranty.

Located in Deal, a picturesque seaside town with rich history, these homes are just moments away from the vibrant high street, the beach, and excellent local amenities, including independent boutiques, cafes, and renowned restaurants.

Whether you're looking for a stylish permanent residence or a chic coastal retreat, these homes offer the perfect blend of historic charm and modern luxury, with the peace of mind of being constructed by expert local craftsmen. Don't miss this rare chance to own a piece of Deal's heritage, reimagined for 21st-century living.



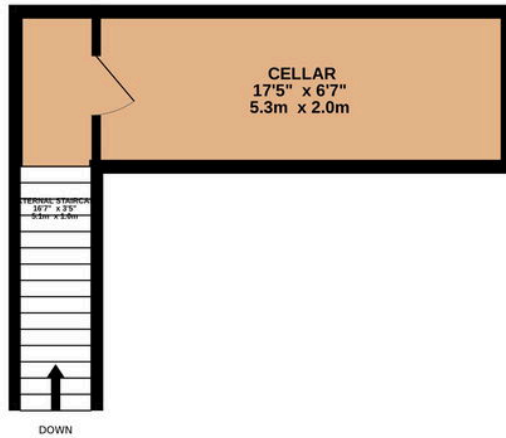




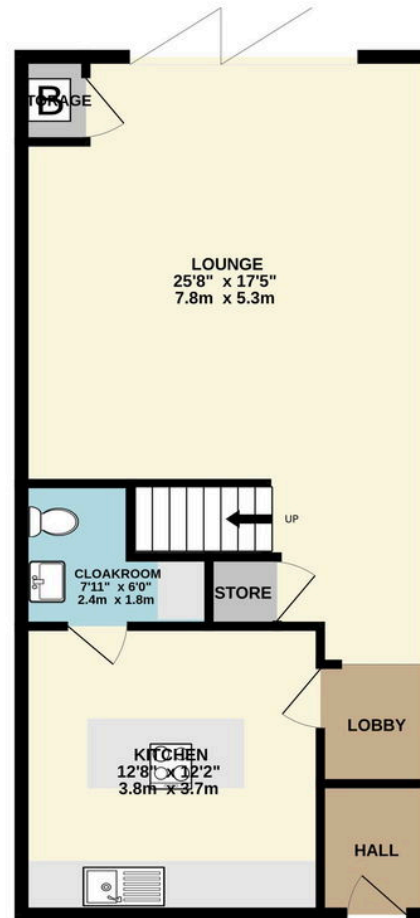




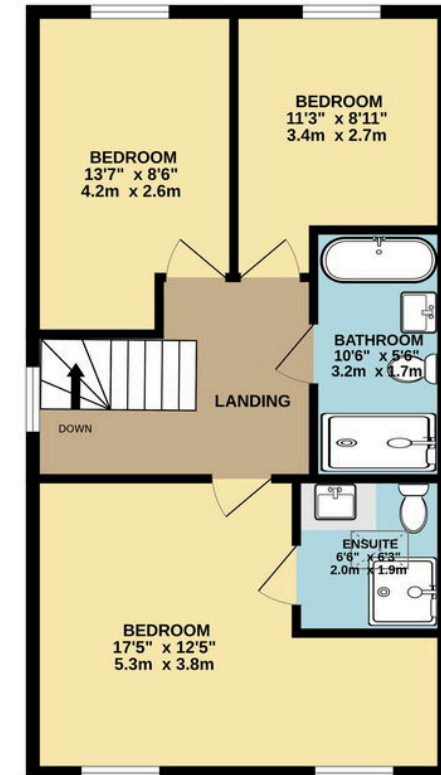
BASEMENT
170 sq.ft. (15.8 sq.m.) approx.



GROUND FLOOR
630 sq.ft. (58.6 sq.m.) approx.



1ST FLOOR
559 sq.ft. (52.0 sq.m.) approx.



TOTAL FLOOR AREA : 1360 sq.ft. (126.4 sq.m.) approx.

Whilst every attempt has been made to ensure the accuracy of the floorplan contained here, measurements of doors, windows, rooms and any other items are approximate and no responsibility is taken for any error, omission or mis-statement. This plan is for illustrative purposes only and should be used as such by any prospective purchaser. The services, systems and appliances shown have not been tested and no guarantee as to their operability or efficiency can be given.
Made with Metropix ©2024

eXp World UK Ltd is a registered company at Level 37, 25 Canada Square, London, E14 5LQ.

Registered company number is 12016573. VAT Registration Number is 327 4120 29